



REAL ESTATE

ESTATE AGENCY : REDEFINED



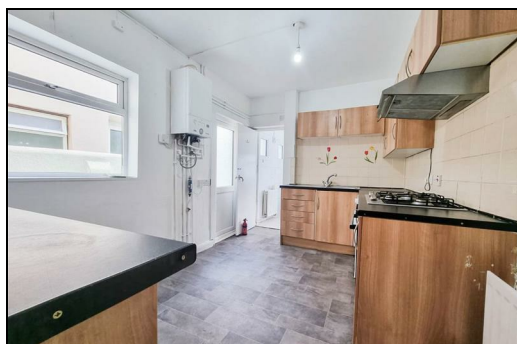
Strover Street, Gillingham ME7 1JD


£1,200 Per Calendar Month

OFFERED WITH THE ZERO DEPOSIT SCHEME OPTION. Three bedroom family home available now. The property consists of two reception rooms, large kitchen with white goods, ground floor bathroom, and three separate bedrooms upstairs. Easy to maintain rear garden.

EPC Rating D

Council Tax Band B



Energy Efficiency Rating		
	Current	Potential
Very energy efficient - lower running costs		
(92 plus) A		
(81-91) B		
(69-80) C		
(55-68) D		
(39-54) E		
(21-38) F		
(1-20) G		
Not energy efficient - higher running costs		
England & Wales	EU Directive 2002/91/EC	

Environmental Impact (CO ₂) Rating		
	Current	Potential
Very environmentally friendly - lower CO2 emissions		
(92 plus) A		
(81-91) B		
(69-80) C		
(55-68) D		
(39-54) E		
(21-38) F		
(1-20) G		
Not environmentally friendly - higher CO2 emissions		
England & Wales	EU Directive 2002/91/EC	